

Glacier Point Level 1

-  YOU ARE HERE
-  Exit Path
-  Fire Extinguisher
-  Fire Alarm Pull
-  Stairs
-  Elevator

Alarm is horn that sounds three times and pauses, then repeats the pattern.

Fire Alarm white strobe lights will flash.

Flashing Amber Light is an alert that an announcement will be made with further instructions.

 Upon exiting the building proceed to the evacuation assembly area southeast of the courtyard.

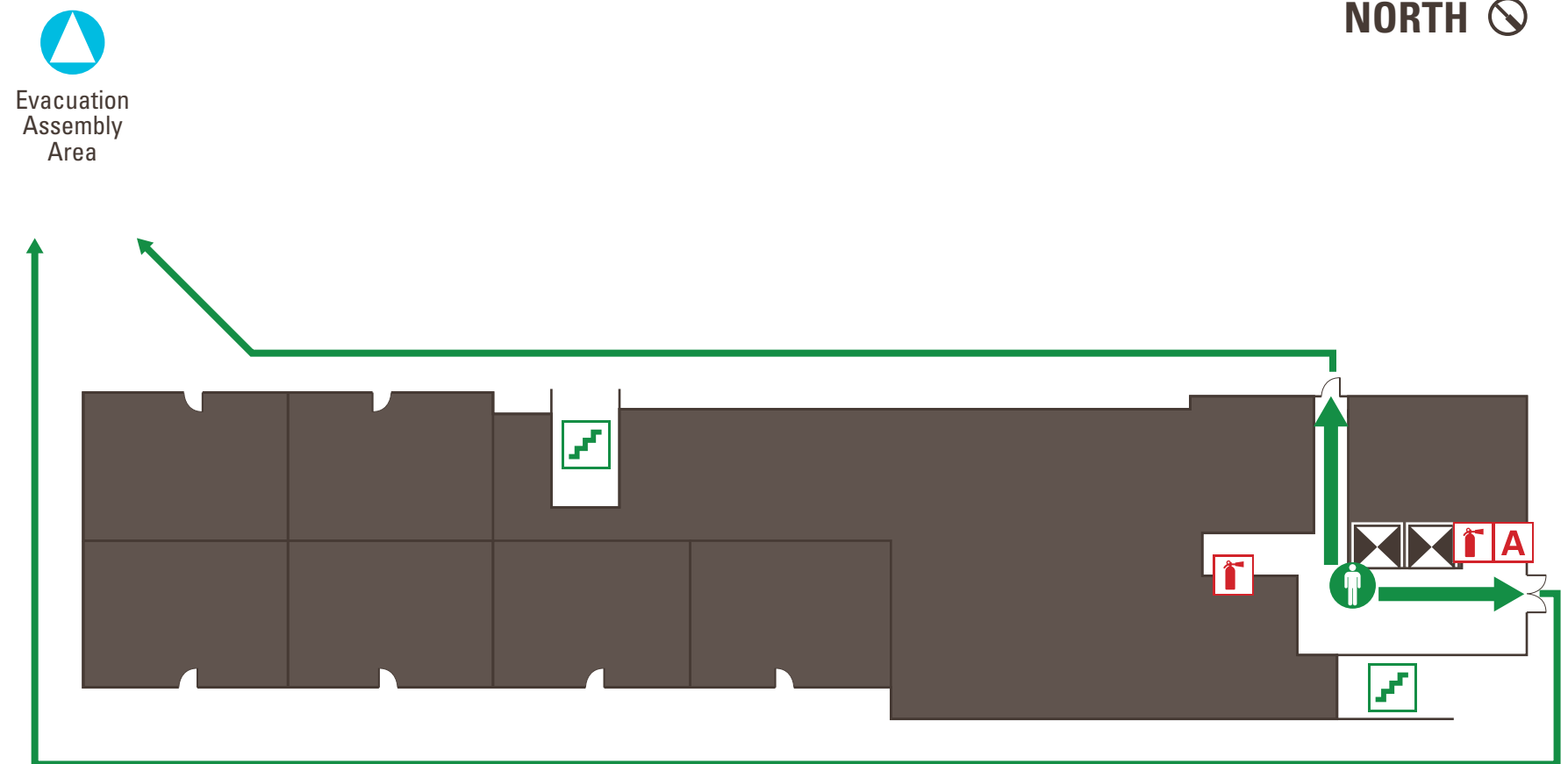
FOR EMERGENCY

DIAL **9-9-1-1** FROM CAMPUS PHONE

DIAL **9-1-1** OR (209) 228-2677 FROM CELL PHONE

IN CASE OF FIRE, USE STAIRS TO EXIT.

DO NOT USE ELEVATORS.



**UNIVERSITY OF CALIFORNIA
MERCED**


FIRE MARSHAL

16:06, Jun 29 2018

Approval of this plan does not authorize or approve any omission or deviation from Applicable regulations.

Final approval is subject to field inspection. One set of approved plans shall be available on the Project at all times.

Glacier Point Level 1

-  YOU ARE HERE
-  Exit Path
-  Fire Extinguisher
-  Fire Alarm Pull
-  Stairs
-  Elevator

Alarm is horn that sounds three times and pauses, then repeats the pattern.

Fire Alarm white strobe lights will flash.

Flashing Amber Light is an alert that an announcement will be made with further instructions.

 Upon exiting the building proceed to the evacuation assembly area southeast of the courtyard.

FOR EMERGENCY

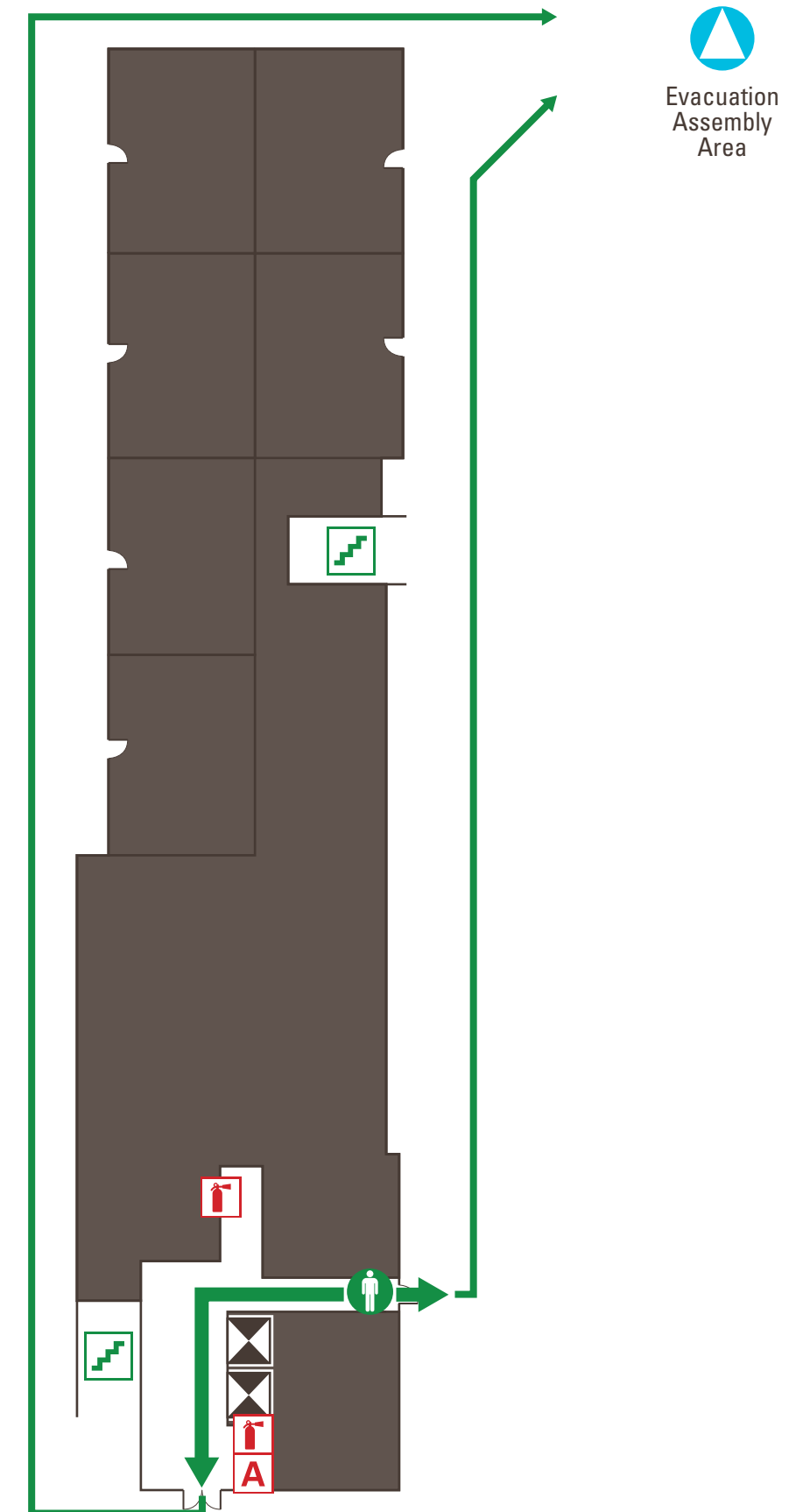
DIAL **9-9-1-1** FROM CAMPUS PHONE

DIAL **9-1-1** OR (209) 228-2677 FROM CELL PHONE

IN CASE OF FIRE, USE STAIRS TO EXIT.





DO NOT USE ELEVATORS.

NORTH 



Glacier Point Level 1

NORTH 

-  YOU ARE HERE
-  Exit Path
-  Fire Extinguisher
-  Stairs
-  Elevator

Alarm is horn that sounds three times and pauses, then repeats the pattern.

Fire Alarm white strobe lights will flash.

Flashing Amber Light is an alert that an announcement will be made with further instructions.

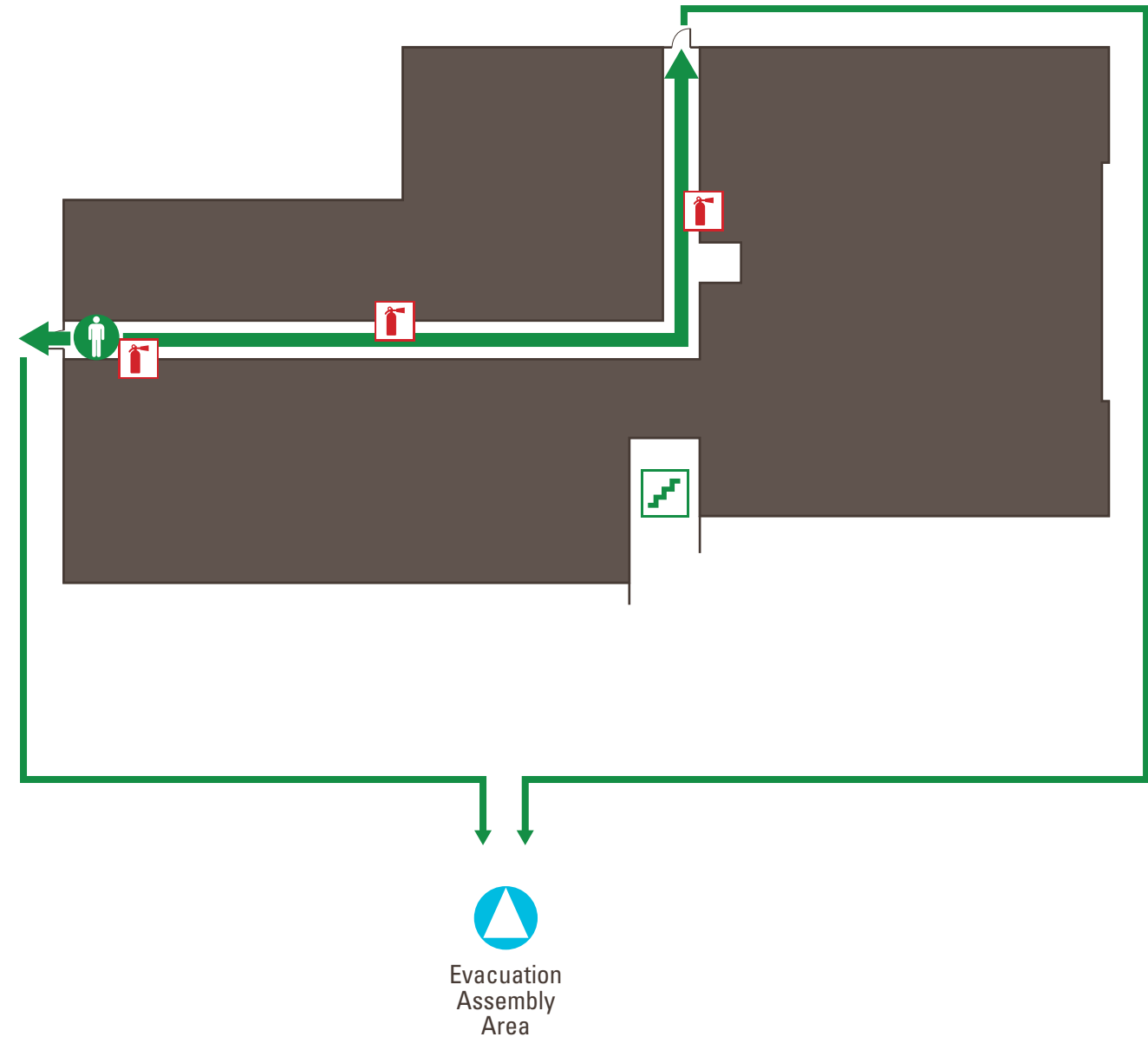
 Upon exiting the building proceed to the evacuation assembly area southeast of the courtyard.

FOR EMERGENCY

DIAL **9-9-1-1** FROM CAMPUS PHONE






DIAL **9-1-1** OR (209) 228-2677 FROM CELL PHONE

IN CASE OF FIRE, USE STAIRS TO EXIT.
DO NOT USE ELEVATORS.



Glacier Point Level 1


NORTH 

-  YOU ARE HERE
-  Exit Path
-  Fire Extinguisher
-  Stairs
-  Elevator

Alarm is horn that sounds three times and pauses, then repeats the pattern.

Fire Alarm white strobe lights will flash.

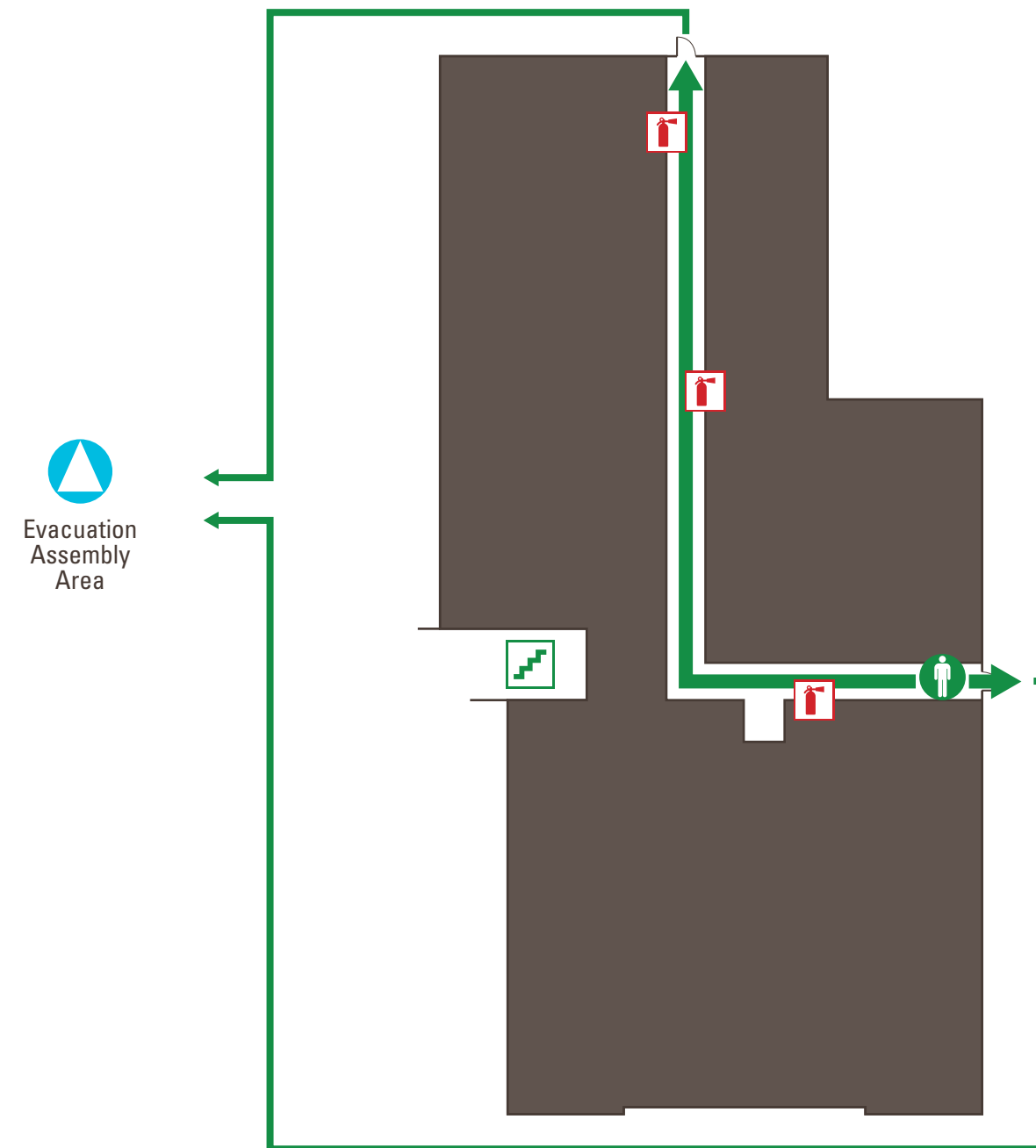
Flashing Amber Light is an alert that an announcement will be made with further instructions.

 Upon exiting the building proceed to the evacuation assembly area southeast of the courtyard.

FOR EMERGENCY







DIAL **9-9-1-1** FROM CAMPUS PHONE

DIAL **9-1-1** OR (209) 228-2677 FROM CELL PHONE



IN CASE OF FIRE, USE STAIRS TO EXIT.
DO NOT USE ELEVATORS.

Glacier Point Level 2

- | | |
|---|---|
|  YOU ARE HERE |  Emergency Phone |
|  Exit Path |  Stairs |
|  Fire Extinguisher |  Elevator |

Alarm is horn that sounds three times and pauses, then repeats the pattern.

Fire Alarm white strobe lights will flash.

Flashing Amber Light is an alert that an announcement will be made with further instructions.

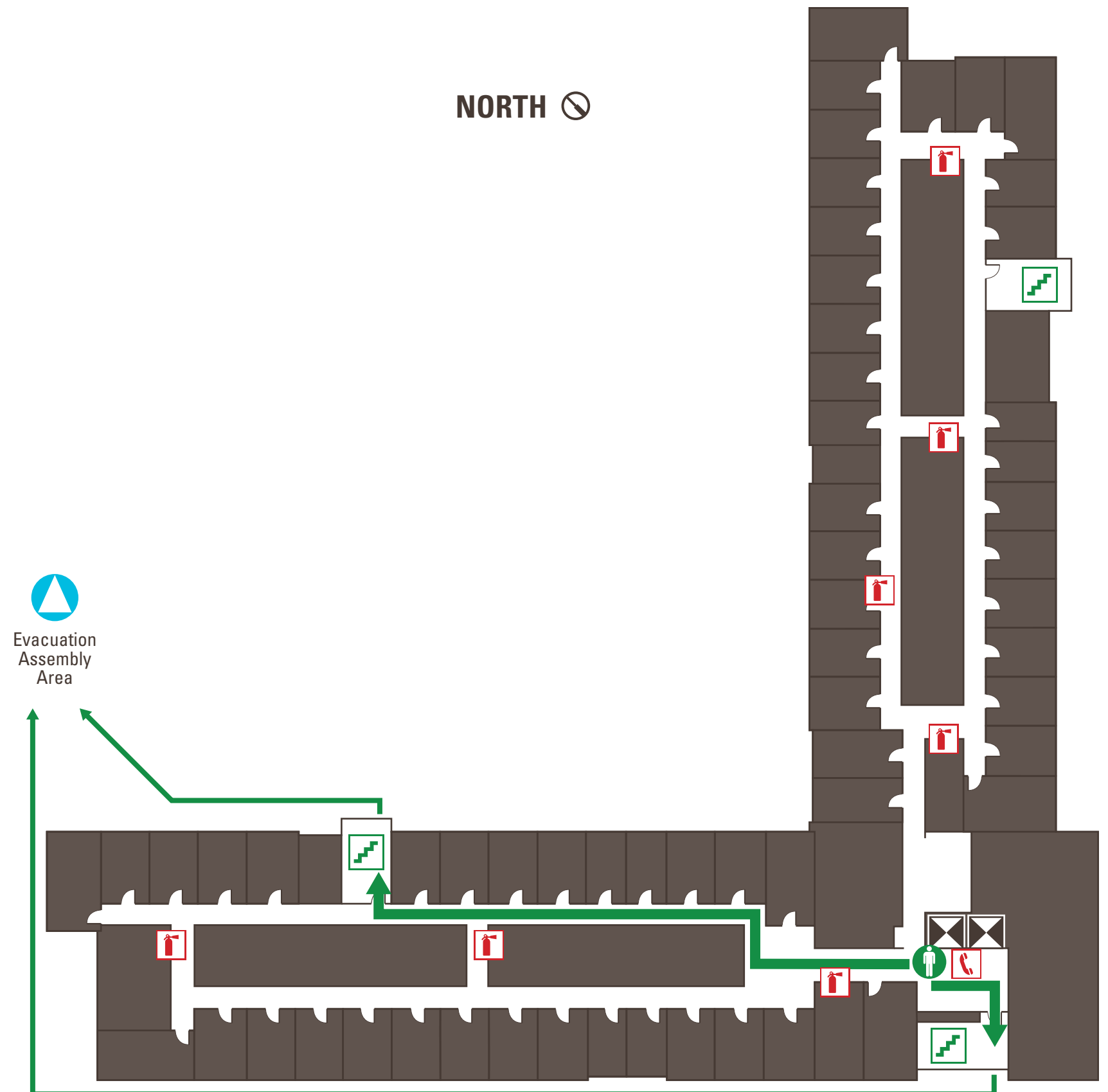
 Upon exiting the building proceed to the evacuation assembly area southeast of the courtyard.

FOR EMERGENCY






DIAL **9-9-1-1** FROM CAMPUS PHONE

DIAL **9-1-1** OR (209) 228-2677 FROM CELL PHONE

IN CASE OF FIRE, USE STAIRS TO EXIT. DO NOT USE ELEVATORS.



Glacier Point Level 2

- | | |
|---|---|
|  YOU ARE HERE |  Emergency Phone |
|  Exit Path |  Stairs |
|  Fire Extinguisher |  Elevator |

Alarm is horn that sounds three times and pauses, then repeats the pattern.

Fire Alarm white strobe lights will flash.

Flashing Amber Light is an alert that an announcement will be made with further instructions.

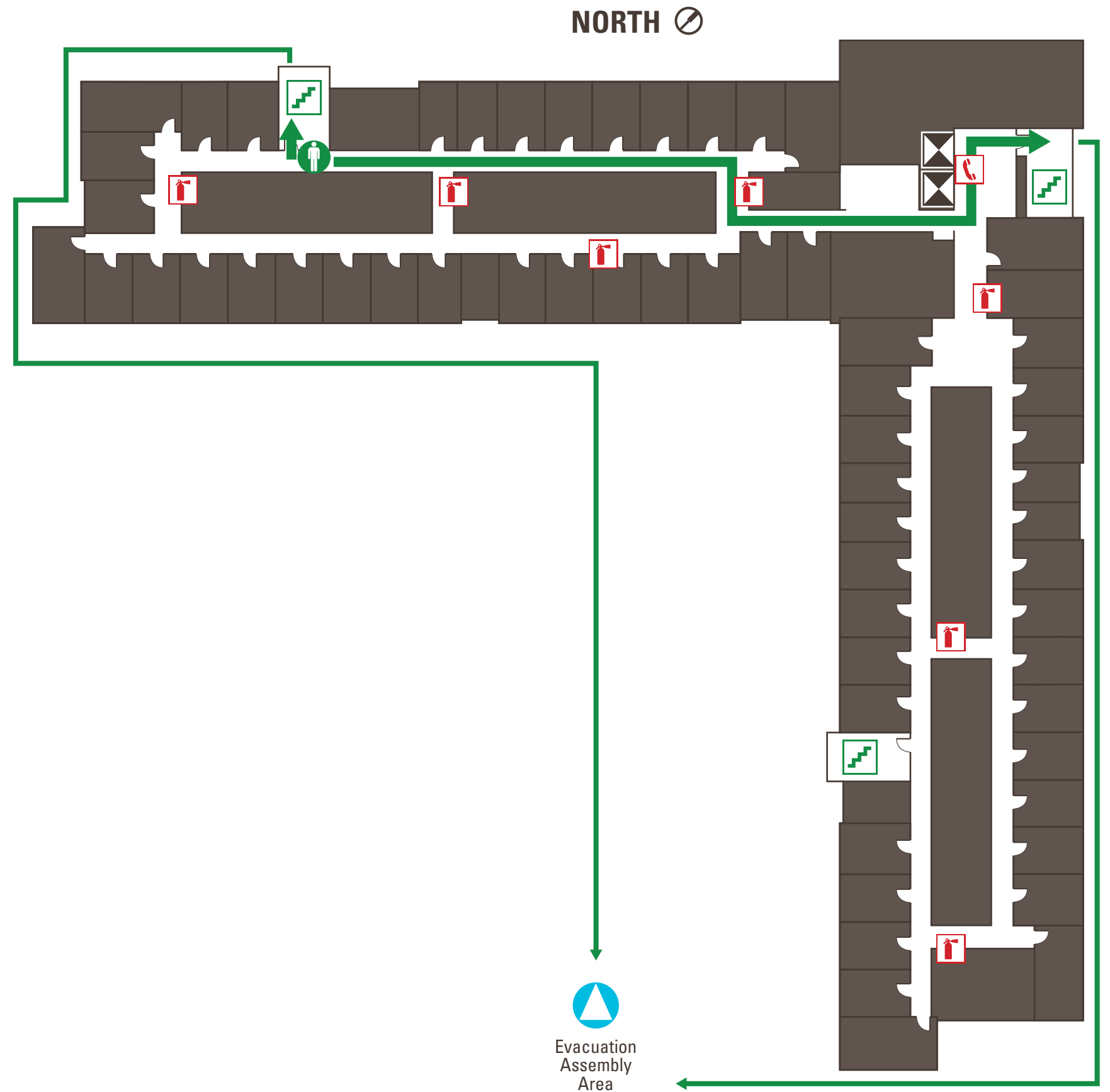
 Upon exiting the building proceed to the evacuation assembly area southeast of the courtyard.

FOR EMERGENCY







DIAL **9-9-1-1** FROM CAMPUS PHONE

DIAL **9-1-1** OR (209) 228-2677 FROM
CELL PHONE

IN CASE OF FIRE, USE STAIRS TO
EXIT. DO NOT USE ELEVATORS.



Glacier Point Level 3

- | | |
|---|---|
|  YOU ARE HERE |  Emergency Phone |
|  Exit Path |  Stairs |
|  Fire Extinguisher |  Elevator |

Alarm is horn that sounds three times and pauses, then repeats the pattern.

Fire Alarm white strobe lights will flash.

Flashing Amber Light is an alert that an announcement will be made with further instructions.

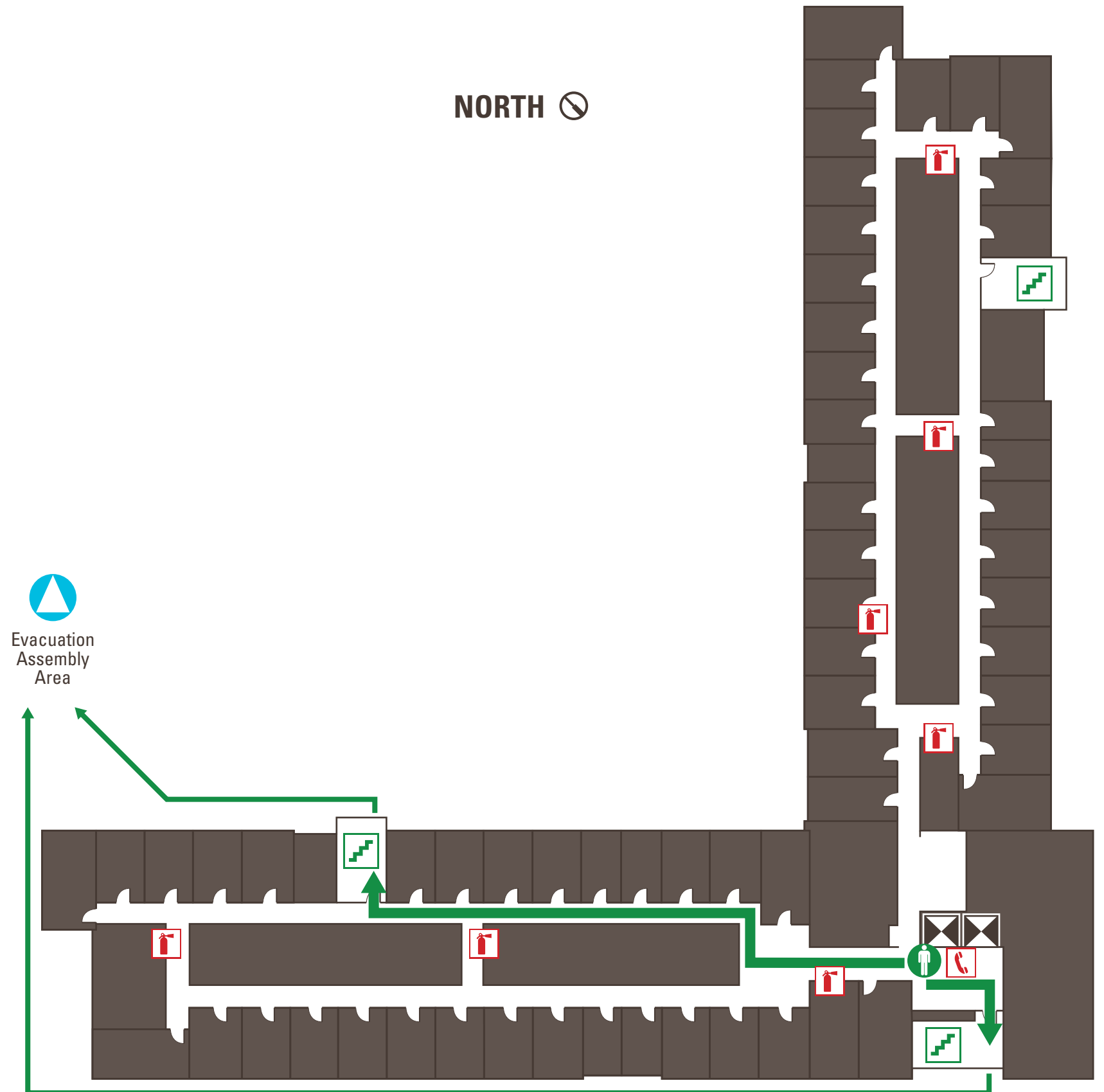
 Upon exiting the building proceed to the evacuation assembly area southeast of the courtyard.

FOR EMERGENCY







DIAL **9-9-1-1** FROM CAMPUS PHONE

DIAL **9-1-1** OR (209) 228-2677 FROM CELL PHONE

IN CASE OF FIRE, USE STAIRS TO EXIT. DO NOT USE ELEVATORS.



Glacier Point Level 3

- | | |
|---|---|
|  YOU ARE HERE |  Emergency Phone |
|  Exit Path |  Stairs |
|  Fire Extinguisher |  Elevator |

Alarm is horn that sounds three times and pauses, then repeats the pattern.

Fire Alarm white strobe lights will flash.

Flashing Amber Light is an alert that an announcement will be made with further instructions.

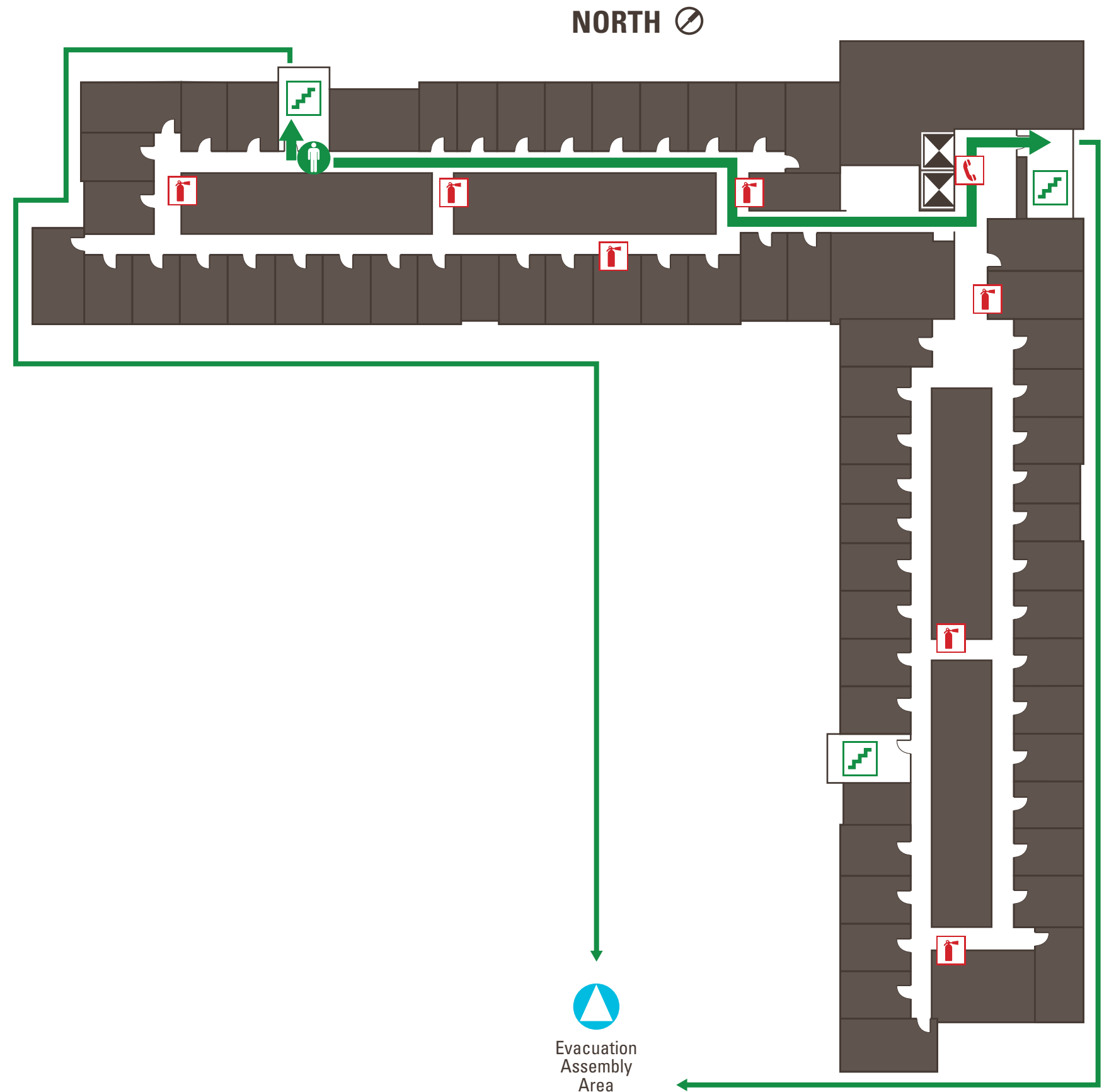
 Upon exiting the building proceed to the evacuation assembly area southeast of the courtyard.

FOR EMERGENCY







DIAL **9-9-1-1** FROM CAMPUS PHONE

DIAL **9-1-1** OR (209) 228-2677 FROM CELL PHONE

IN CASE OF FIRE, USE STAIRS TO EXIT. DO NOT USE ELEVATORS.



Glacier Point Level 4

- | | |
|---|---|
|  YOU ARE HERE |  Emergency Phone |
|  Exit Path |  Stairs |
|  Fire Extinguisher |  Elevator |

Alarm is horn that sounds three times and pauses, then repeats the pattern.

Fire Alarm white strobe lights will flash.

Flashing Amber Light is an alert that an announcement will be made with further instructions.

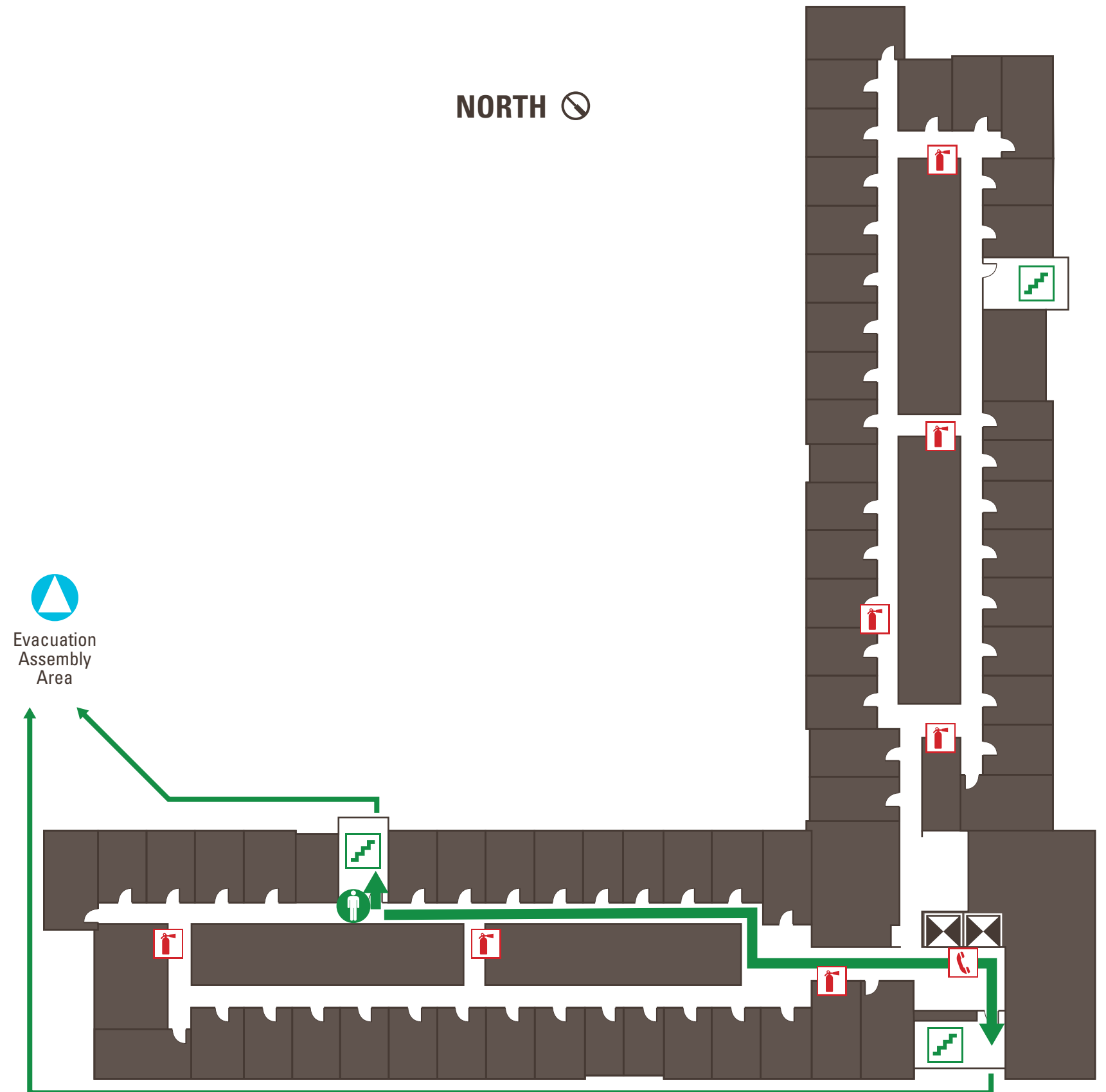
 Upon exiting the building proceed to the evacuation assembly area southeast of the courtyard.

FOR EMERGENCY







DIAL **9-9-1-1** FROM CAMPUS PHONE

DIAL **9-1-1** OR (209) 228-2677 FROM
CELL PHONE

IN CASE OF FIRE, USE STAIRS TO
EXIT. DO NOT USE ELEVATORS.



Glacier Point Level 4

- | | |
|---|---|
|  YOU ARE HERE |  Emergency Phone |
|  Exit Path |  Stairs |
|  Fire Extinguisher |  Elevator |

Alarm is horn that sounds three times and pauses, then repeats the pattern.

Fire Alarm white strobe lights will flash.

Flashing Amber Light is an alert that an announcement will be made with further instructions.

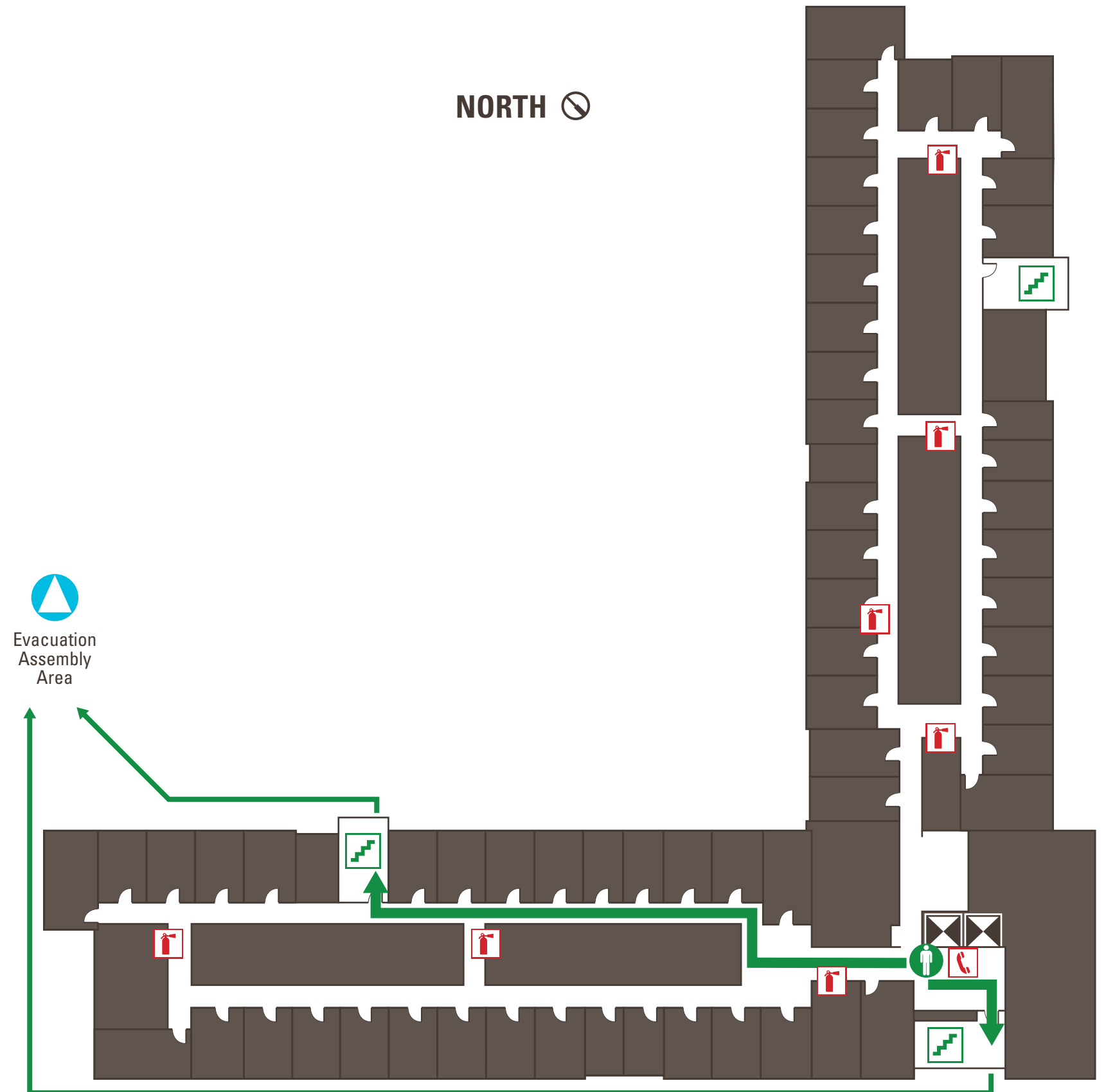
 Upon exiting the building proceed to the evacuation assembly area southeast of the courtyard.

FOR EMERGENCY







DIAL **9-9-1-1** FROM CAMPUS PHONE

DIAL **9-1-1** OR (209) 228-2677 FROM CELL PHONE

IN CASE OF FIRE, USE STAIRS TO EXIT. DO NOT USE ELEVATORS.



Glacier Point Level 4

- | | |
|---|---|
|  YOU ARE HERE |  Emergency Phone |
|  Exit Path |  Stairs |
|  Fire Extinguisher |  Elevator |

Alarm is horn that sounds three times and pauses, then repeats the pattern.

Fire Alarm white strobe lights will flash.

Flashing Amber Light is an alert that an announcement will be made with further instructions.

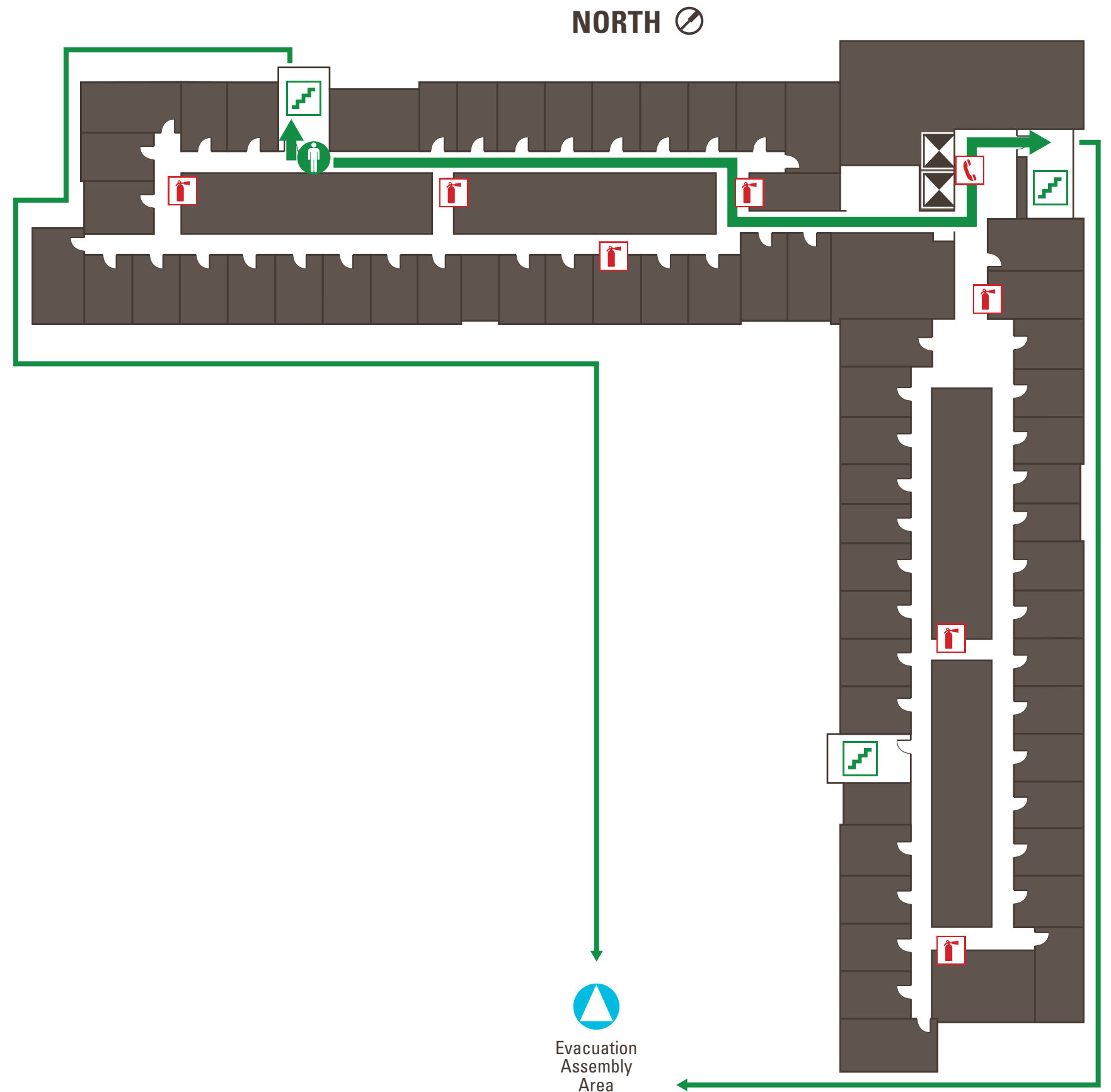
 Upon exiting the building proceed to the evacuation assembly area southeast of the courtyard.

FOR EMERGENCY







DIAL **9-9-1-1** FROM CAMPUS PHONE

DIAL **9-1-1** OR (209) 228-2677 FROM
CELL PHONE

IN CASE OF FIRE, USE STAIRS TO
EXIT. DO NOT USE ELEVATORS.



Glacier Point Level 5

- | | |
|---|---|
|  YOU ARE HERE |  Emergency Phone |
|  Exit Path |  Stairs |
|  Fire Extinguisher |  Elevator |

Alarm is horn that sounds three times and pauses, then repeats the pattern.

Fire Alarm white strobe lights will flash.

Flashing Amber Light is an alert that an announcement will be made with further instructions.

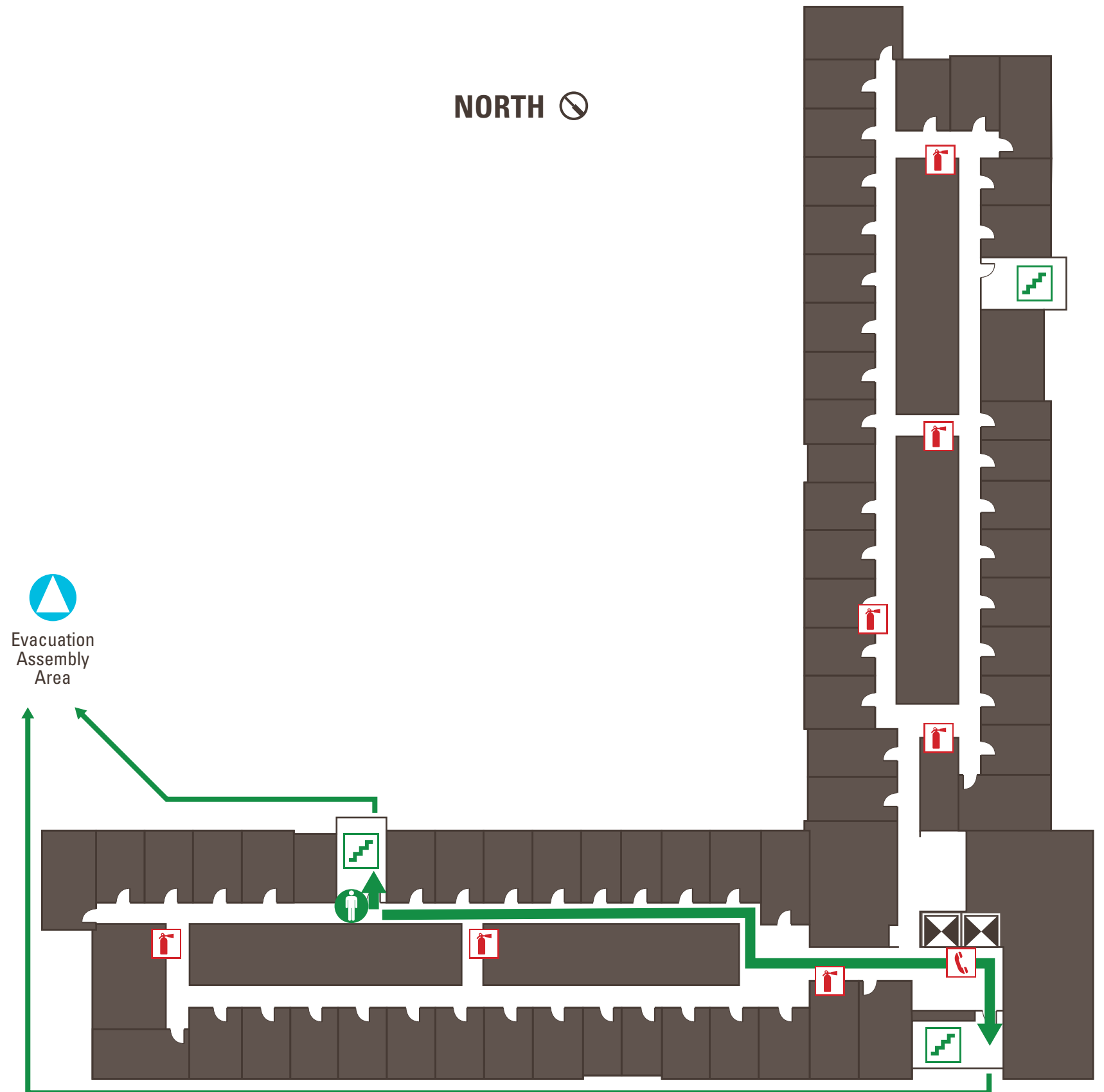
 Upon exiting the building proceed to the evacuation assembly area southeast of the courtyard.

FOR EMERGENCY







DIAL **9-9-1-1** FROM CAMPUS PHONE

DIAL **9-1-1** OR (209) 228-2677 FROM CELL PHONE

IN CASE OF FIRE, USE STAIRS TO EXIT. DO NOT USE ELEVATORS.



Glacier Point Level 5

- | | |
|---|---|
|  YOU ARE HERE |  Emergency Phone |
|  Exit Path |  Stairs |
|  Fire Extinguisher |  Elevator |

Alarm is horn that sounds three times and pauses, then repeats the pattern.

Fire Alarm white strobe lights will flash.

Flashing Amber Light is an alert that an announcement will be made with further instructions.

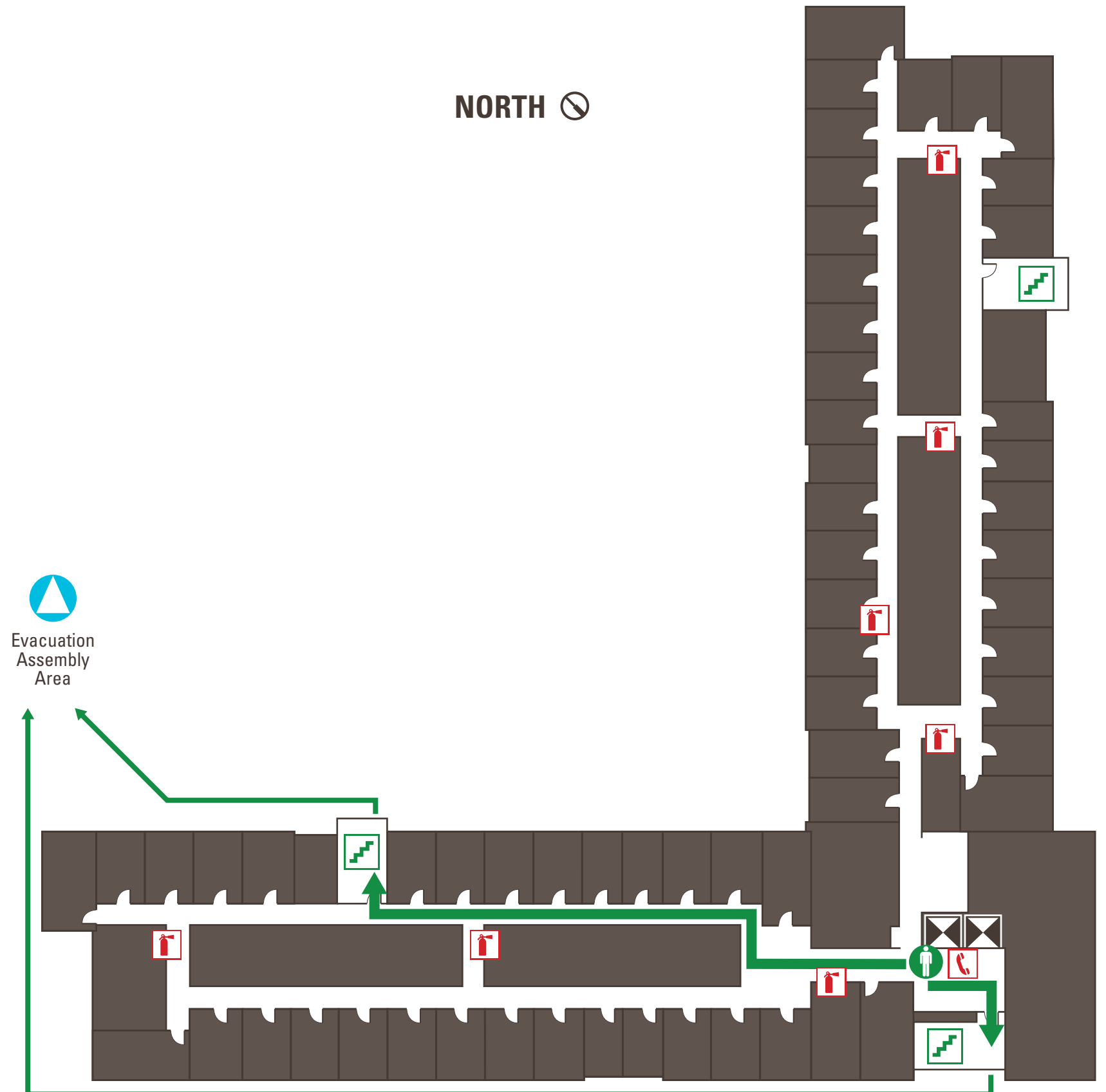
 Upon exiting the building proceed to the evacuation assembly area southeast of the courtyard.

FOR EMERGENCY







DIAL **9-9-1-1** FROM CAMPUS PHONE

DIAL **9-1-1** OR (209) 228-2677 FROM CELL PHONE

IN CASE OF FIRE, USE STAIRS TO EXIT. DO NOT USE ELEVATORS.



Glacier Point Level 5

- | | |
|---|---|
|  YOU ARE HERE |  Emergency Phone |
|  Exit Path |  Stairs |
|  Fire Extinguisher |  Elevator |

Alarm is horn that sounds three times and pauses, then repeats the pattern.

Fire Alarm white strobe lights will flash.

Flashing Amber Light is an alert that an announcement will be made with further instructions.

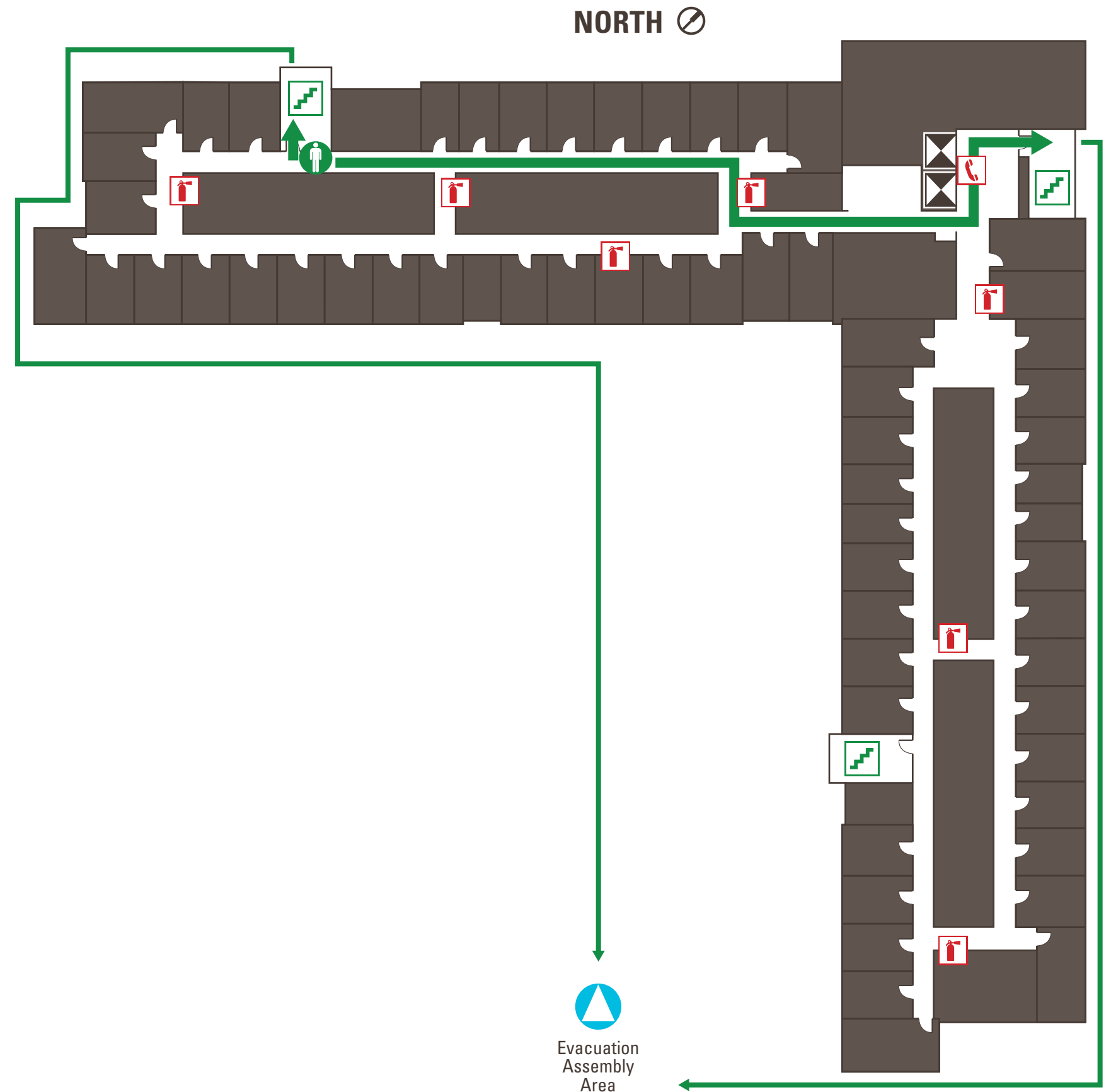
 Upon exiting the building proceed to the evacuation assembly area southeast of the courtyard.

FOR EMERGENCY

DIAL **9-9-1-1** FROM CAMPUS PHONE






DIAL **9-1-1** OR (209) 228-2677 FROM CELL PHONE

IN CASE OF FIRE, USE STAIRS TO EXIT. DO NOT USE ELEVATORS.



Glacier Point Level 6

NORTH 

-  YOU ARE HERE
-  Exit Path
-  Fire Extinguisher
-  Emergency Phone
-  Stairs
-  Elevator

Alarm is horn that sounds three times and pauses, then repeats the pattern.

Fire Alarm white strobe lights will flash.

Flashing Amber Light is an alert that an announcement will be made with further instructions.

 Upon exiting the building proceed to the evacuation assembly area southeast of the courtyard.

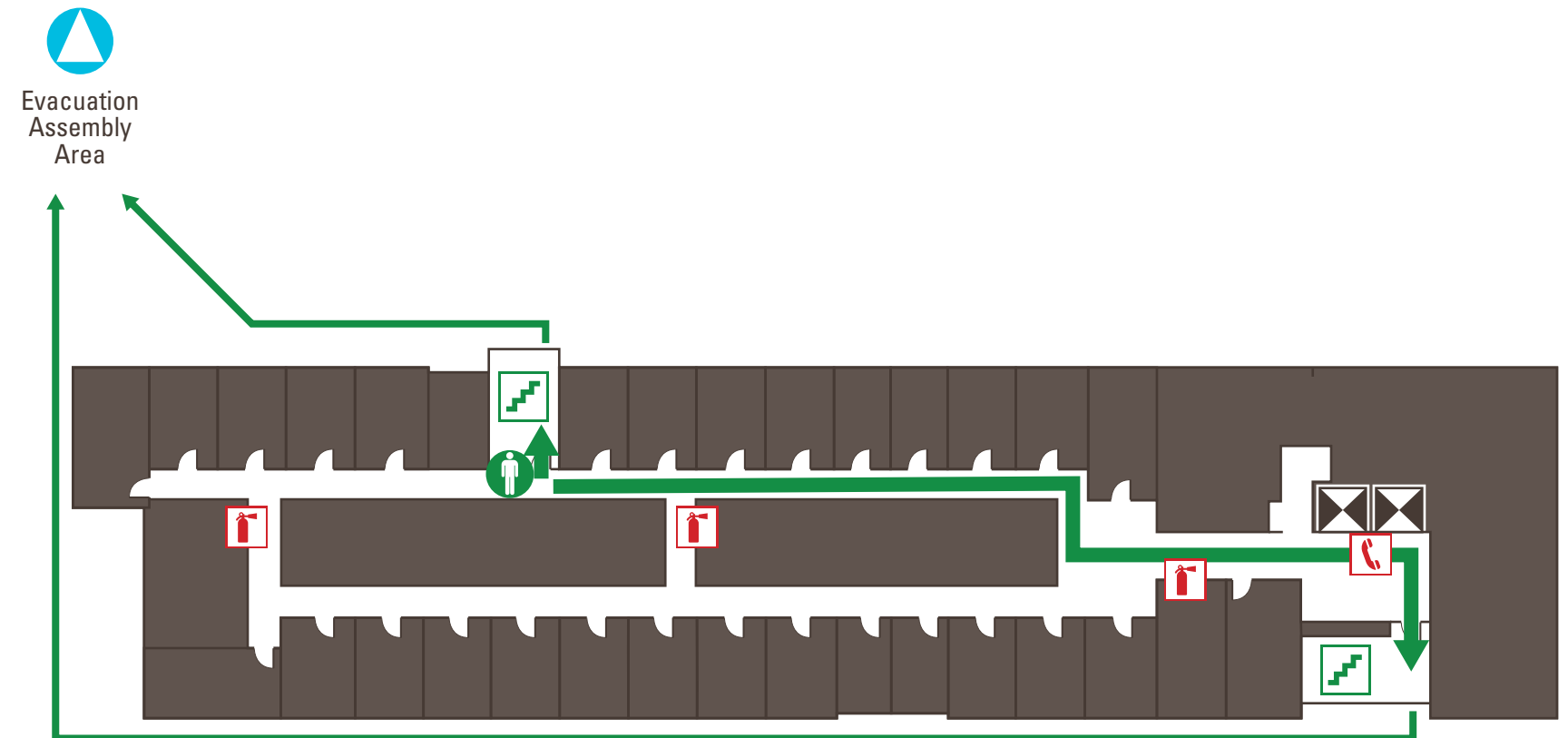
FOR EMERGENCY

DIAL **9-9-1-1** FROM CAMPUS PHONE

DIAL **9-1-1** OR (209) 228-2677 FROM CELL PHONE




IN CASE OF FIRE, USE STAIRS TO EXIT.

DO NOT USE ELEVATORS.



Glacier Point Level 6

NORTH 

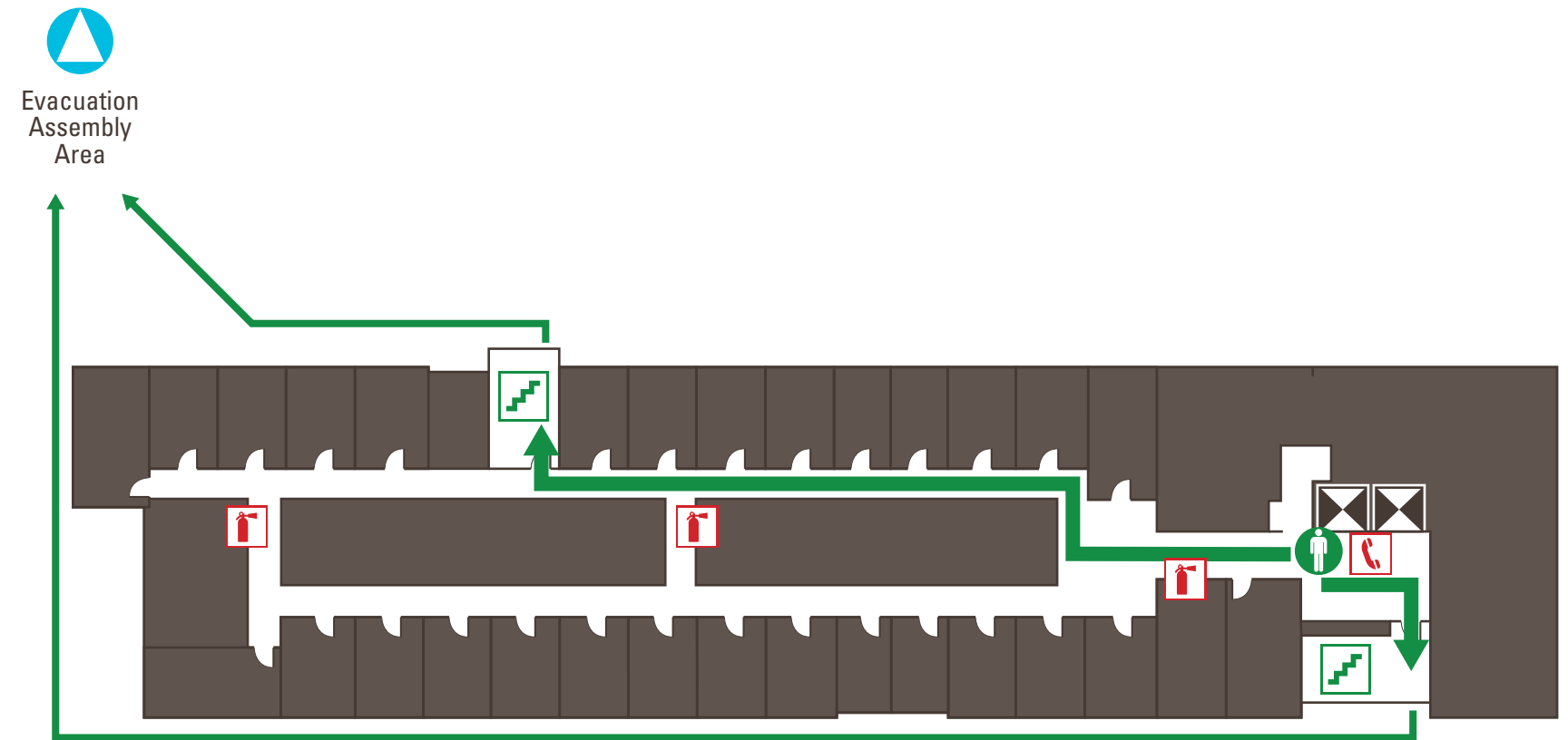
-  YOU ARE HERE
-  Exit Path
-  Fire Extinguisher
-  Emergency Phone
-  Stairs
-  Elevator

Alarm is horn that sounds three times and pauses, then repeats the pattern.

Fire Alarm white strobe lights will flash.

Flashing Amber Light is an alert that an announcement will be made with further instructions.

 Upon exiting the building proceed to the evacuation assembly area southeast of the courtyard.



FOR EMERGENCY

DIAL **9-9-1-1** FROM CAMPUS PHONE

DIAL **9-1-1** OR (209) 228-2677 FROM CELL PHONE

IN CASE OF FIRE, USE STAIRS TO EXIT.

DO NOT USE ELEVATORS.